



THANK YOU FOR RECYCLING THESE:

IpswichRecycles.org



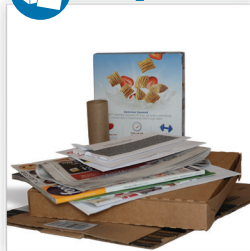
Aluminum and Steel Cans
empty and rinse



Food and Beverage Cartons
empty and replace cap



Bottles and Jars
empty and rinse



Mixed Paper, Newspaper, Magazines, and Flattened Cardboard



Kitchen, Laundry, Bath: Bottles and Containers
empty and replace cap

NO!



Do Not Bag Recyclables
No Trash



No Plastic Bags (return to retail)



No Food or Liquid (empty all containers)



No Clothing or Linens (use donation programs)



No Tangles (no hoses, wires, chains, or electronics)

978-356-6612

Department of Public Works