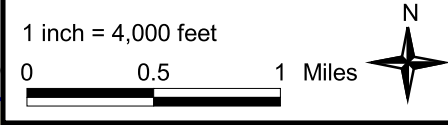


Key to Other Transportation Recommendations

- #1 Re-stripe Topsfield Rd./Mill Rd. intersection to improve safety and reduce the speed of turning vehicles.
- #2 Investigate the feasibility of building a parking structure with ground-floor retail for expanded commuter rail parking.
- #3 Improve parking management downtown to free up on-street spaces for short-term customer use.
- #4 Work with local residents to evaluate traffic calming options for High Street.
- #5 Narrow North Main Street to reclaim additional land for Meeting House Green.
- #6 Re-stripe Jeffreys Neck Rd./Newmarch Rd. intersection to improve safety.



Legend

Existing Infrastructure

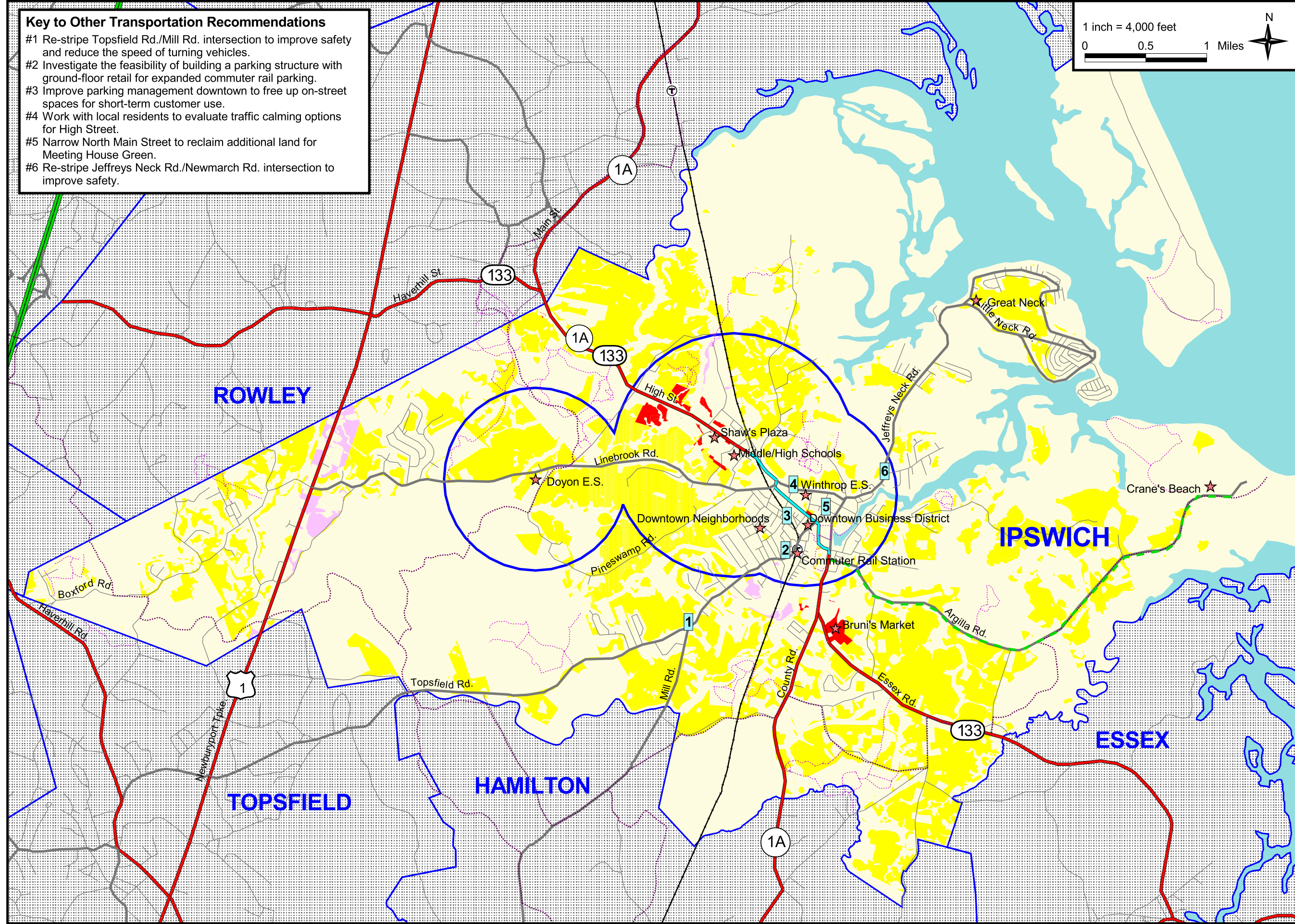
- Roads
 - State, Limited Access Hwy.
 - State, Other Numbered Hwy.
 - Town, Numbered Hwy.
 - Town, Major Road
 - Town, Minor Road
- Commuter Rail Stops
- Bay Circuit Trail
- Other Public Trails

Proposed New Infrastructure and Improvements

- Proposed Off-Road Trail
- First Priority for Sidewalks
(Areas within 3/4 mi. of elementary schools and 1 mi. of the middle/high school.)
- Potential Destinations for Bicycle/Pedestrian Traffic
- Other Recommendations

Potential Sources of New Traffic (Developable Land by Zoning)

- Business
- Industrial
- Residential



Drawing Title

Transportation Action Map

Project Title

Ipswich Community Development Plan

Daylor Consulting Group Inc.

Ten Forbes Road
Braintree, MA 02184

(781) 849-7070
(781) 849-0096 (fax)
www.daylor.com

Created by:
Jeffrey Milder, 11/18/02
1976.apr

Figure 5-1