

BENCHMARK M-1
X-CUT IN CAP BOLT
OF HYDRANT
EL. 18.12



CONTROL POINT 1
MAG NAIL
EL. 15.23

APPROXIMATE
100' BUFFER ZONE
LINE TO BVW
(PER RECORD PLAN
AT CON COMM
OFFICE)

BENCHMARK M-2
FLANGE BOLT HEAD
OVER MAIN NOZZLE HYD.
EL. 17.68

PLAN
1"=20'

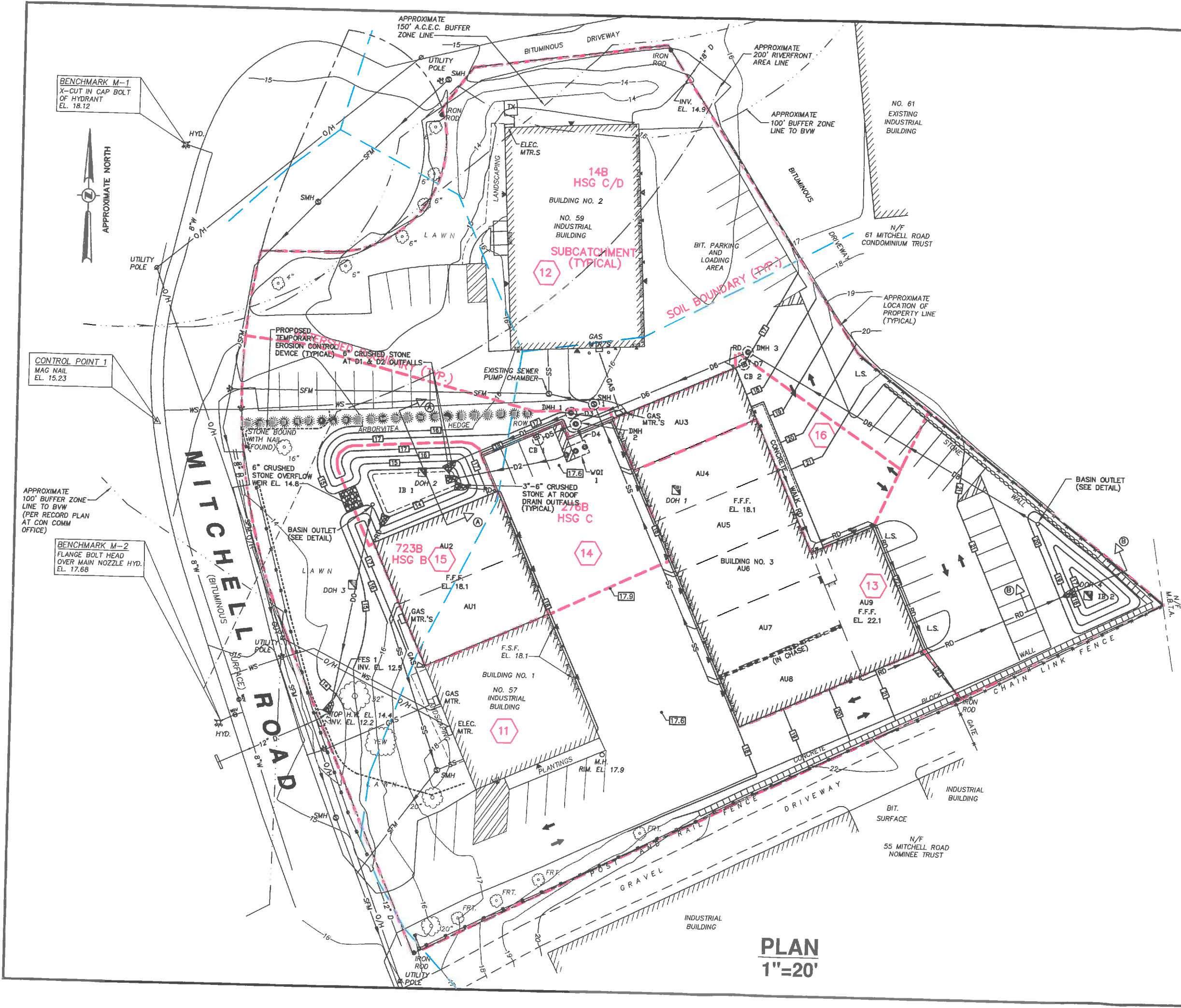
PRE DEVELOPMENT WATERSHED PLAN

PERMIT PLAN
prepared for
C&J REALTY TRUST

57 & 59 MITCHELL ROAD IPSWICH, MA

GRAHAM ASSOCIATES, INC.
CIVIL ENGINEERS
TWO CENTRAL STREET, IPSWICH, MA 01938 (978) 356-2756

DRAWN BY: GMM	CHECKED BY: HLG	PROJECT NO.: 19-1922
DATE: MARCH 8, 2021	SCALE: AS SHOWN	SHEET 1 OF 1



BENCHMARK M-1
X-CUT IN CAP BOLT
OF HYDRANT
EL. 18.12



CONTROL POINT 1
MAG NAIL
EL. 15.23

APPROXIMATE
100' BUFFER ZONE
LINE TO BVW
(PER RECORD PLAN
AT CON COMM
OFFICE)

BENCHMARK M-2
FLANGE BOLT HEAD
OVER MAIN NOZZLE HYD.
EL. 17.66

PLAN
1"=20'

POST DEVELOPMENT WATERSHED PLAN

PERMIT PLAN
prepared for
C&J REALTY TRUST

57 & 59 MITCHELL ROAD IPSWICH, MA

GRAHAM ASSOCIATES, INC.
CIVIL ENGINEERS
TWO CENTRAL STREET, IPSWICH, MA 01938 (978) 356-2756

DRAWN BY: JC	CHECKED BY: HLG	PROJECT NO.: 19-1922
DATE: MARCH 8, 2021	SCALE: AS SHOWN	SHEET 1 OF 1