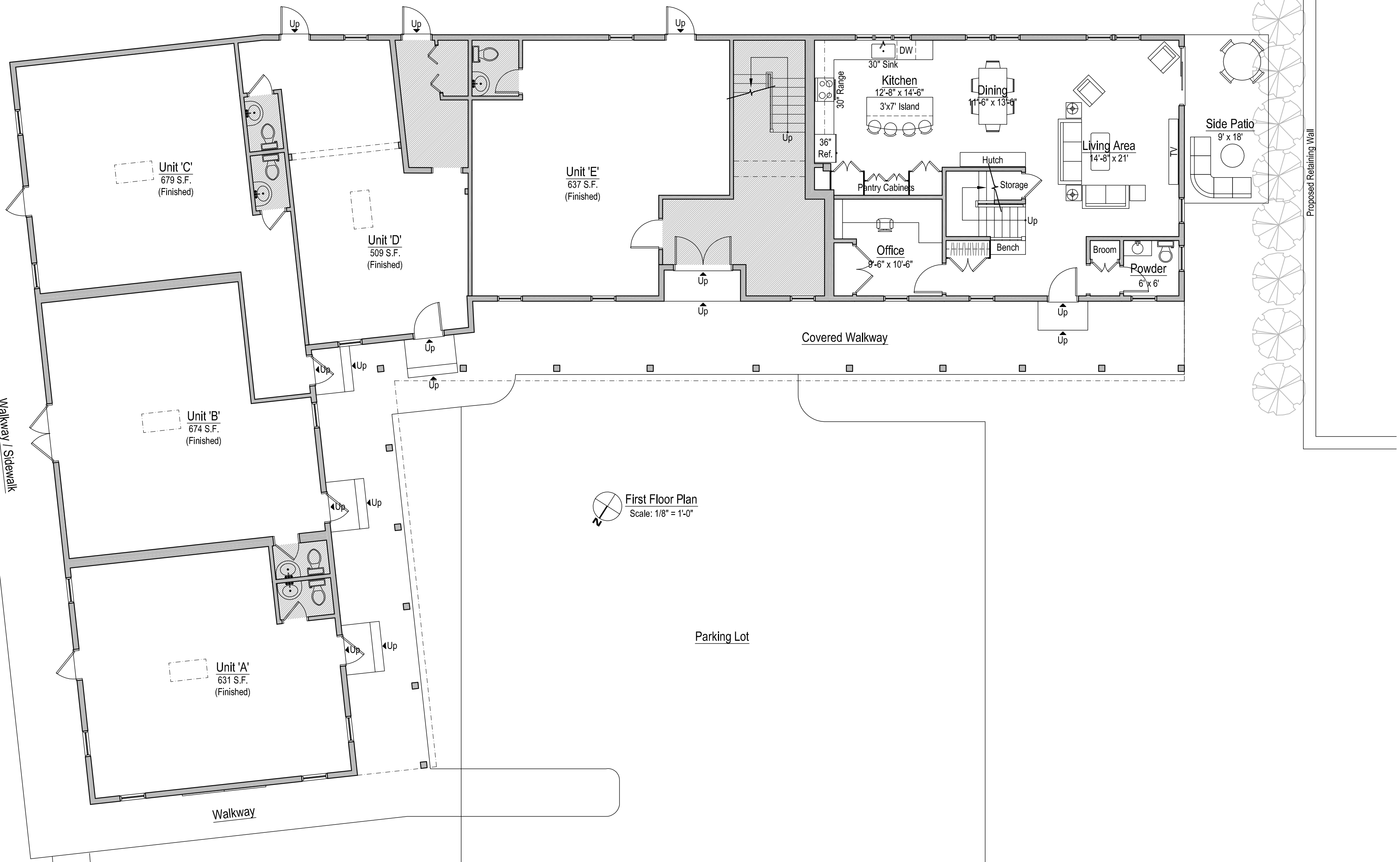


High Street

Grass

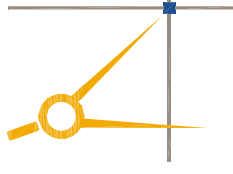
Walkway / Sidewalk



First Floor Plan
Scale: 1/8" = 1'-0"

Floor Areas	
First Floor Residential	1,118 S.F.
Second Floor Residential	870 S.F.
First Floor Commercial (Finished)	3,130 S.F.
Second Floor Commercial (Finished)	889 S.F.
Second Floor Commercial Storage (Unfinished)	2,165 S.F.
Lobby/ Circulation/ Bathroom Space	744 S.F.
<hr/>	
Total Residential	1,988 S.F.
Total Commercial	6,928 S.F.
Grand Total	8,916 S.F.

Floor Areas	
Existing Space Converted to Residential	1,988 S.F.
Proposed Additional Commercial Space (Unfinished Storage)	2,165 S.F.
<hr/>	
<hr/>	



savoie nolan

ARCHITECTS LLC

4 South Main Street - Ipswich, MA 01938 - 978-356-7786

Proposed Renovations and Addition to
Mixed Use Building
126 High Street, Ipswich, MA

First Floor Plan

Date: 8.25.2021 Scale: As Noted

Drawing Number

1